



4 ton Porta Power

Stock no. BFRK4 / 05007



INSTRUCTION MANUAL

Please read this manual BEFORE using this tool

IMPORTANT:

PLEASE READ THESE INSTRUCTIONS CAREFULLY. NOTE THE SAFE OPERATIONAL REQUIREMENTS, WARNINGS AND CAUTIONS. USE THE PRODUCT CORRECTLY AND ONLY FOR THE PURPOSE FOR WHICH IT IS INTENDED. FAILURE TO DO SO MAY CAUSE DAMAGE AND/OR PERSONAL INJURY AND MAY VOID THE WARRANTY. PLEASE KEEP THIS INSTRUCTION MANUAL SAFE FOR FUTURE USE.

SAFETY INSTRUCTIONS AND WARNINGS

1. The maximum ram capacity is 4 tons. DO NOT exceed this rated capacity.
2. Maximum load must not exceed half of the rated capacity when all tubes are used.
3. The maximum spreader capacity is 0.5 tons. DO NOT exceed this rated capacity when using the spreader.
4. DO NOT overextend the ram, as it is possible to force the plunger out of the top of the ram.
5. Open the breather valve when using this equipment. When not in use, keep it closed.
6. When coupler valves are disconnected, always insert dust cap to keep the oil lines clean.
7. DO NOT drop any heavy objects onto the hose and DO NOT twist the hose.
8. Always keep the hose clean to avoid damage to the hose and couplers.
9. If the load is not centered to the ram plunger, pump carefully. If you have to press the handle more heavily than normal, stop working and adjust the setup so that the load is more evenly distributed. This should reduce the effort required.
10. Keep the equipment away from heat and fire as this may damage or weaken the equipment.
11. Check the hydraulic oil level. If it is not sufficient, add high quality hydraulic fluid as necessary.

SPECIFICATIONS

| | | | |
|----------------|-------------|----------------------|-------------|
| Rated capacity | 4 Ton | Pump output pressure | 8120 psi |
| Ram min height | 10.5 inches | Stroke | 4.75 inches |
| Oil capacity | 12.3 oz. | Net weight | 49.5 lbs |

OPERATING INSTRUCTIONS

PUMP UNIT

1. Connect the hydraulic ram, hose and pump unit together, ensure that you have securely fastened the couplers before pumping.
2. Open the breather valve.
3. Firmly close the release valve by turning it clockwise (fig. 1).
4. Pump the handle up and down to supply pressure (fig. 1).
5. Turn the release valve counterclockwise to release the pressure.

NOTE: The pump can be used in any position from horizontal to vertical. Always keep the hose end of the pump downward when it is positioned vertically (fig. 2).

ATTACHMENT COMBINATIONS

The pump can be used with the multi-directional ram. This enables many attachment combinations, some of which are shown in fig. 3.

Fig. 1

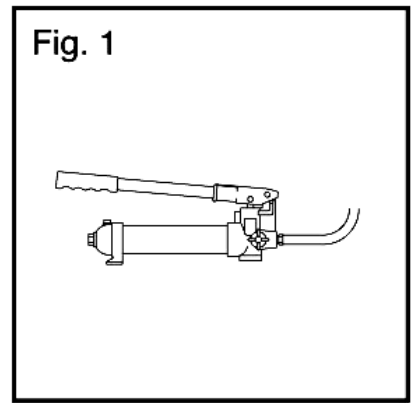


Fig. 2

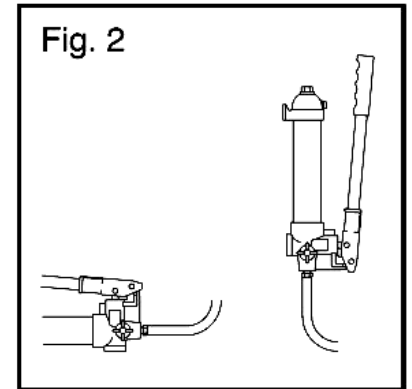
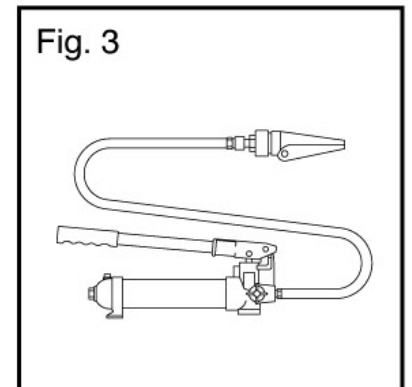


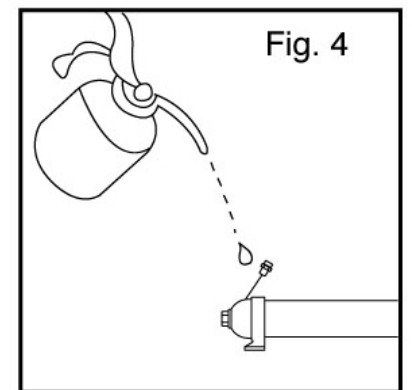
Fig. 3



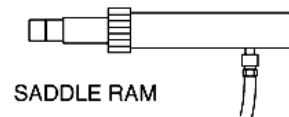
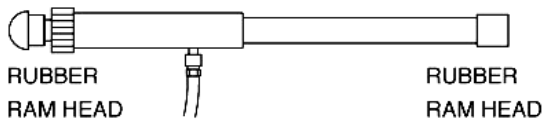
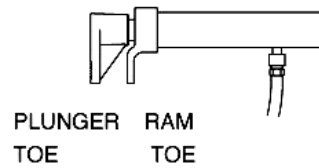
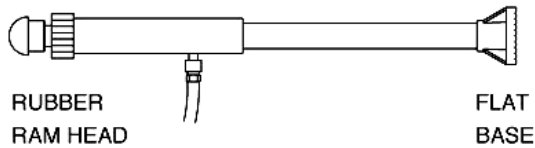
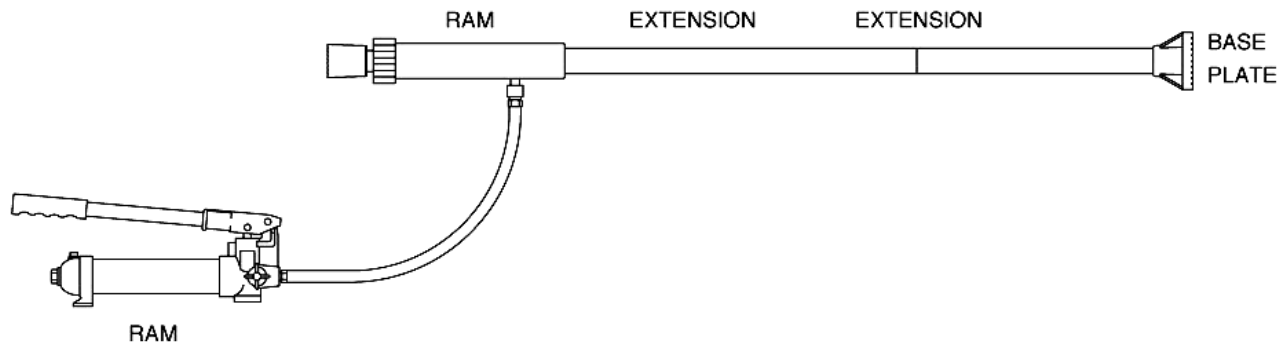
CARE AND MAINTENANCE

1. When the equipment is not in use, the pump should be stored with the release valve open.
2. Remove the nut to check the hydraulic oil level. If it is not adequate, add the same high quality hydraulic oil as necessary (fig. 4). YOUR JACK WAS FILLED AT THE FACTORY WITH HIGH GRADE HYDRAULIC FLUID. ONLY USE APPROVED HYDRAULIC FLUID.
3. After extensive use, the oil supply should be replaced to ensure longer equipment life. Remove the nut to drain the oil. Ensure that no dirt gets into the system.

Fig. 4



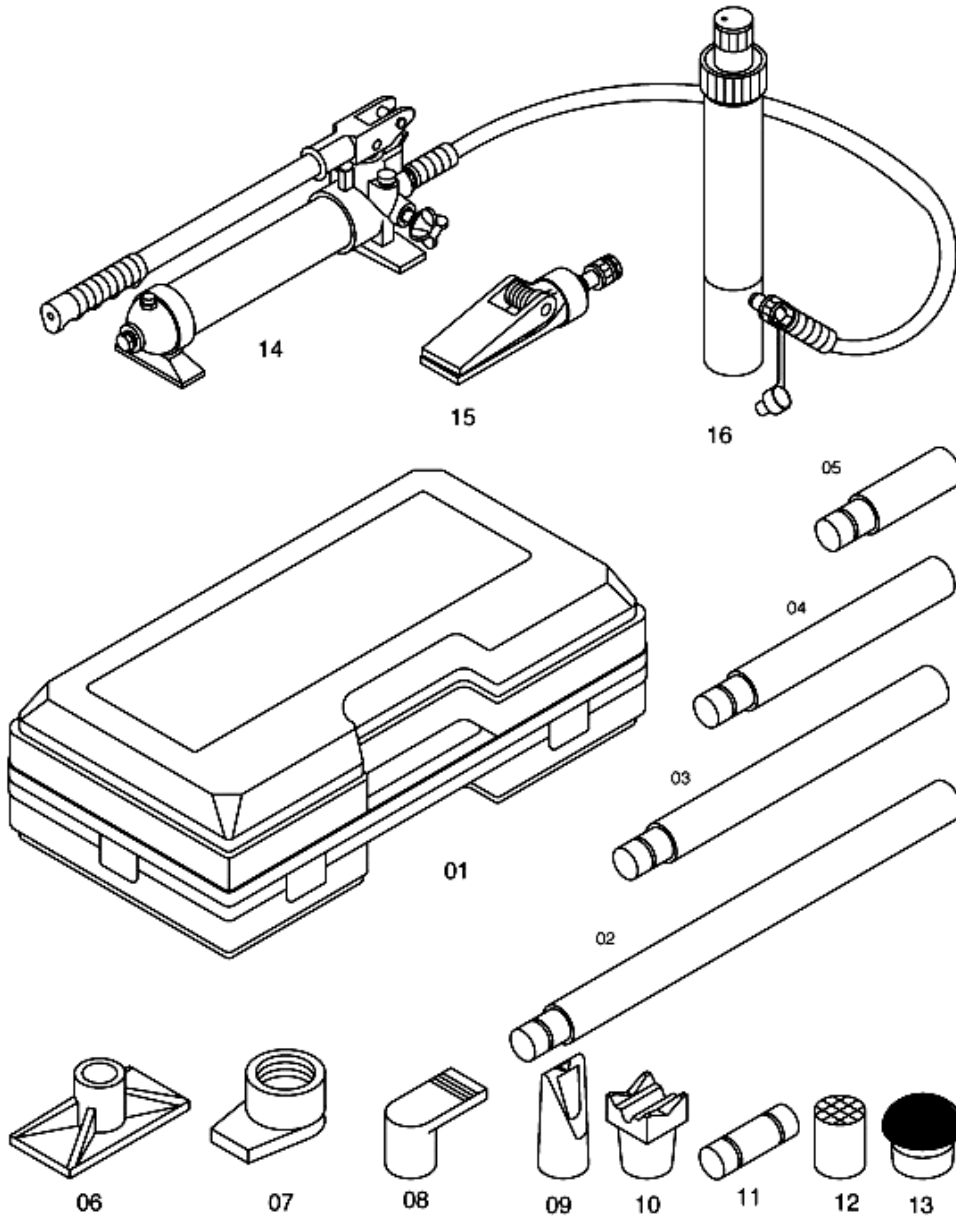
SUGGESTED SYSTEM CONFIGURATIONS



TROUBLESHOOTING PROBLEMS

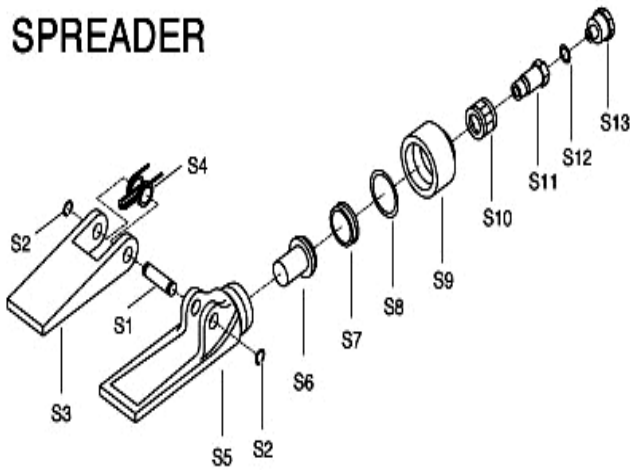
| TROUBLE | CAUSE | SOLUTION |
|-----------------------------------|---|---|
| Pump will not work. | Dirt on valve seals or worn seals. | Replace with new seals. |
| Pump will not produce pressure. | Air blockage | Open the release valve and breather valve. |
| Pump unit is unsteady under load. | Air blockage | Pump the handle to full stroke several times and close the release valve. |
| Pump will not produce pressure. | Low Hydraulic fluid level, or reservoir overfilled. | Check the fluid level. Remove breather valve assembly and add hydraulic fluid if needed. Remove any excess fluid. |

4 Ton Body Repair Kit diagram and parts list

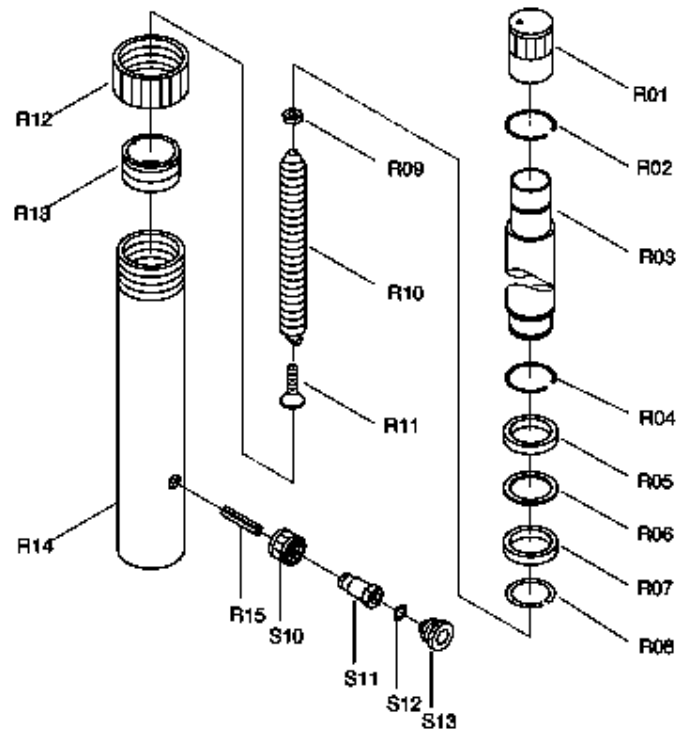


| PART NO. | DESCRIPTION | PART NO. | DESCRIPTION |
|----------|-------------------------|----------|-----------------|
| 01 | Blow Mold Case | 09 | Cleft Cap |
| 02 | 16-17/32" Extension Bar | 10 | "V" Base |
| 03 | 8-1/2" Extension Bar | 11 | Male Connector |
| 04 | 5-1/32" Extension Bar | 12 | Serrated Cap |
| 05 | 3-15/64" Extension Bar | 13 | Rubber Head |
| 06 | Base Plate | 14 | 4 Ton Pump Unit |
| 07 | Ram Toe | 15 | Spreading Wedge |
| 08 | Plunger Toe | 16 | Ram Unit |

SPREADER



RAM

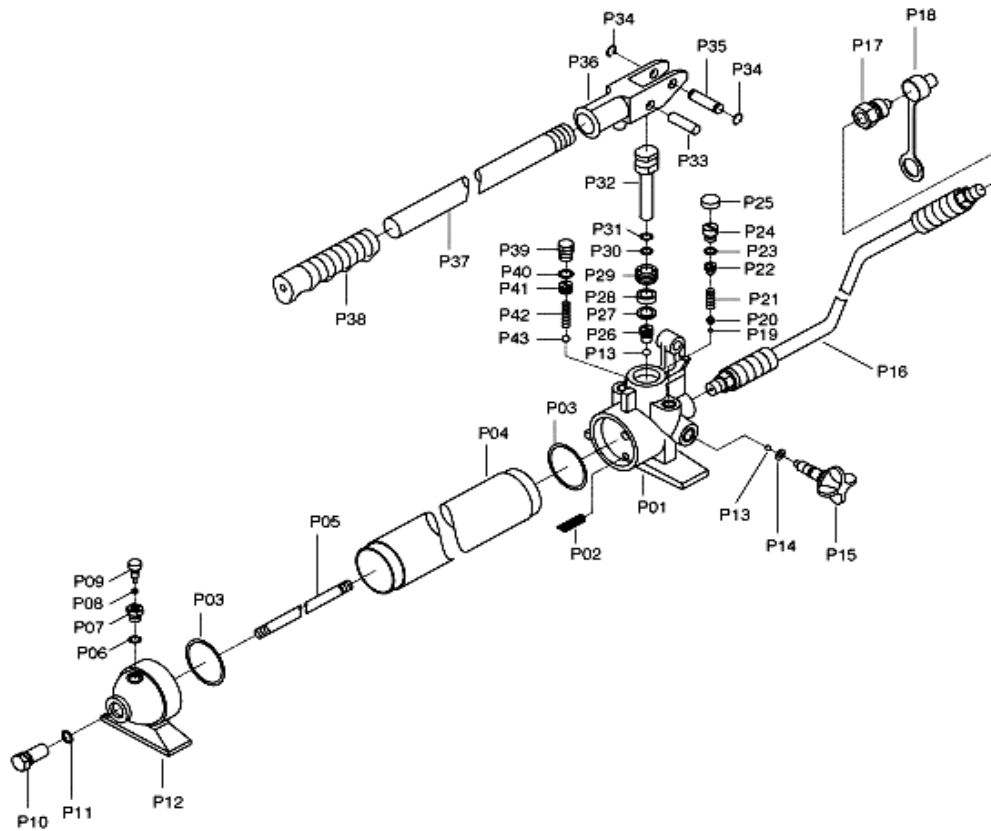


Spreader – parts list

| PART NO. | DESCRIPTION |
|----------|-----------------|
| S1 | Pivot Pit |
| S2 | Clip |
| S3 | Upper Duck Bill |
| S4 | Spring |
| S5 | Lower Duck Bill |
| S6 | Piston |
| S7 | Cup Seal |
| S8 | O-Ring |
| S9 | End Cap |
| S10 | Coupling Ring |
| S11 | Coupling Bolt |
| S12 | O-Ring |
| S13 | Dust Cap |

Ram – parts list

| PART NO. | DESCRIPTION |
|----------|----------------|
| R01 | Cover |
| R02 | Clip |
| R03 | Ram |
| R04 | Clip |
| R05 | Bushing |
| R06 | Nylon Ring |
| R07 | Sealing Ring |
| R08 | Clip |
| R09 | Nut |
| R10 | Spring |
| R11 | Screw |
| R12 | Protection Cap |
| R13 | Ring |
| R14 | Cylinder |
| R15 | Screw |
| S10 | Coupling Ring |
| S11 | Coupling Bolt |
| S12 | O-Ring |
| S13 | Dust Cap |



| PART NO. | DESCRIPTION |
|----------|----------------------|
| P01 | Valve Block |
| P02 | Oil Filler |
| P03 | O-Ring |
| P04 | Reservoir |
| P05 | Tie Rod |
| P06 | Nylon Ring |
| P07 | Fill Plug |
| P08 | Sealing Ring |
| P09 | Breather Valve |
| P10 | Screw |
| P11 | O-Ring |
| P12 | Pump Foot |
| P13 | Ball |
| P14 | O-Ring |
| P15 | Release Valve |
| P16 | Hydraulic Hose |
| P17 | Coupler |
| P18 | Dust Proof Cover |
| P19 | Ball |
| P20 | Ball Cup |
| P21 | Spring |
| P22 | Screw (Safety Valve) |

| PART NO. | DESCRIPTION |
|----------|----------------|
| P23 | O-Ring |
| P24 | Screw |
| P25 | Plastic Cap |
| P26 | Screw |
| P27 | Nylon Ring |
| P28 | Sealing Ring |
| P29 | Screw |
| P30 | O-Ring |
| P31 | Nylon Ring |
| P32 | Piston |
| P33 | Pin |
| P34 | Clip |
| P35 | Pin |
| P36 | Handle Bracket |
| P37 | Handle |
| P38 | Handle Sleeve |
| P39 | Screw |
| P40 | O-Ring |
| P41 | Screw |
| P42 | Spring |
| P43 | Ball |