



6 FOOT

SCRAPER BLADE

Stock No. SBLD/03987



INSTRUCTION MANUAL

Please read this manual BEFORE using this item

WARNINGS

All implements with moving parts are potentially hazardous. There is no substitute for a cautious, safe-minded operator who recognizes the potential hazards and follows reasonable safety practices. The manufacturer has designed this implement to be used with all its safety equipment properly attached to minimize the chance of accidents.

BEFORE YOU START!!

Read the safety messages on the implement and shown in your manual. Observe the rules of safety and common sense!

THIS SAFETY ALERT SYMBOL IDENTIFIES IMPORTANT SAFETY WARNING MESSAGES. CAREFULLY READ EACH WARNING MESSAGE THAT FOLLOWS. FAILURE TO UNDERSTAND AND OBEY A SAFETY WARNING, OR RECOGNIZE A SAFETY HAZARD, COULD RESULT IN AN INJURY OR DEATH TO YOU OR OTHERS AROUND YOU. THE OPERATOR IS ULTIMATELY RESPONSIBLE FOR THE SAFETY OF HIMSELF, AS WELL AS OTHERS, IN THE OPERATING AREA OF THE REAR BLADE.
UNDERSTAND SIGNAL WORDS

DANGER and **WARNING** safety signs are located near the specific hazard. **CAUTION** safety signs list general precautions. The safety-alert symbol is also used in this manual to call attention to safety messages.

Important Safety Information!

Working with unfamiliar equipment can lead to careless injuries. Read this manual, and the manual for your tractor, before assembly or operating, to acquaint yourself with the machines. It is the implement owner's responsibility, if this machine is used by any person other than yourself, is loaned or rented, to make certain that the operator, prior to operating:

1. Reads and understands the operator's manuals.
2. Is instructed in safe and proper use.
3. The use of this equipment is subject to certain hazards which cannot be protected against by mechanical means or product design.
4. All operators of this equipment must read and understand this entire manual, paying particular attention to safety and operating instructions, prior to using. If there is something in this manual you do not understand, ask your supervisor, or your dealer, to explain it to you.

Most accidents occur because of neglect or carelessness. Keep all helpers and bystanders twenty-five feet (25') from an operating rear blade. Only properly trained people should operate this machine. It is recommended the tractor be equipped with a Rollover Protection System (ROPS) and a seat belt that is used. Always stop the tractor, set brake, shut off the tractor engine and remove the tractor key, and lower implement to the ground before dismounting tractor. Never leave equipment unattended with the tractor running.

Please remember it is important that you read and heed the safety signs on the rear blade, and the safety rules set forth. Clean or replace all safety signs if they cannot be clearly read and understood. They are there for your safety as well as the safety of others. The safe use of this machine is strictly up to you, the operator.

SAFETY PRECAUTIONS

MOST ACCIDENTS OCCUR BECAUSE OF NEGLIGENCE OR CARELESSNESS. AVOID NEEDLESS ACCIDENTS BY FOLLOWING ALL OF THE SAFETY PRECAUTIONS LISTED BELOW.

- Machinery should be operated only by those who are responsible and are authorized to do so. Stop the engine, lower all equipment, lock the brakes, and remove the ignition key before dismounting from the tractor.
- Never stand between tractor and implement while tractor is being backed to hitch. Loose fitting clothing should not be worn, to avoid catching on various parts.
- Detach implement in area where children normally do not play.
- When performing adjustments or maintenance on an implement, first lower it to the ground or block it securely at a workable height. Only a qualified operator should be permitted on tractor when in operation; no riders allowed. Make certain everyone is in the clear before starting tractor or raising or lowering equipment. Operate the tractor and implement only while seated in the driver's seat. Reduce speed when transporting mounted implements to avoid bouncing and momentary loss of steering control.
- A heavy load can cause instability of the tractor.
- Use extreme care during road travel. Slow down on turns and watch out for bumps. Tractor may need front counter-weights to counter-balance the weight of the implement.
- Reduce speed on hillsides or curves so there is no danger of tipping.
- Avoid driving too close to the edge of ditches or creeks.
- Do not transport implement on public roads without reflectors and slow moving vehicle emblem in daylight and with approved warning lights at night and other periods of poor visibility.
- Due to the width of some implements, use extra caution on highways, farm roads, and when approaching gates.
- Always be sure the implement is in the proper position for transport.
- Keep alert and watch the front as well as the rear when working with the implement.

WHEN ORDERING REPAIR PARTS, ALWAYS GIVE THE FOLLOWING INFORMATION:

1. PART NUMBER
2. PART DESCRIPTION
3. MODEL NUMBER
4. NAME OF ITEM

Safety Information

- All equipment is potentially hazardous. There is no substitute for a cautious, safe-minded operator who recognizes potential hazards and follows reasonable safety practices.
- When the use of hand tools is required to perform any part of assembly, installation, adjustment, maintaining, repairing, removal, or moving the implement, be sure the tools used are designed and recommended by the tool manufacturer for that specific task.
- Personal protection equipment including safety glasses, safety shoes, and gloves are recommended during assembly, installation, operation, adjustment, maintaining, repairing, removal, or moving the rear blade.
- Always use two people to handle heavy, unwieldy components during assembly, installation, removal, or moving the rear blade.
- Never place any part of your body where it would be in danger if movement should occur during assembly, installation, operation, maintaining, repairing, removal, or moving the implement.
- Never place yourself between the tractor and implement while implement is in operation.
- Do not work under a raised implement unless it is securely blocked or held in position. Do not depend on the tractor hydraulic system to hold the implement in place.

- A heavy load can cause instability of the tractor. Use extreme care during travel. Slow down on turns and watch out for bumps. The tractor may need front counter-weights to counter-balance the weight of the implement.
- Never use alcoholic beverages or drugs which can hinder alertness or coordination while operating this equipment. Consult your doctor about operating this machine while taking prescription medications.
- Do not allow others to ride on the tractor with an operator. Riders are subject to injury such as being struck by foreign objects or being thrown off. Riders obstruct the operator's view resulting in unsafe operation. Never allow anyone to ride on the implement!
- Before you operate the rear blade, check over all pins, bolts and connections to be sure all are securely in place. Replace any damaged or worn parts immediately.
- Do not allow anyone who is not familiar with the safety rules and operation instructions to use this rear blade. Never allow children to operate or be around equipment.
- Use stabilizer bars, adjustable sway chains, or sway blocks on your tractor lift arms to keep the rear blade from swinging side to side. Adjust as tightly as practical for best performance.
- Keep alert and watch the front as well as the rear when working with the implement.
- When maneuvering close to buildings or passing through narrow areas, be sure to allow sufficient clearance for the implement.
- Do not operate close to ditches or creeks. Slow down when operating over rough ground.
- Always be sure the implement is in the fully raised position when in transport.
- When adjusting the angle of the moldboard assembly, be sure that your feet are never under the rear blade.
- Use extreme caution when backfilling deep holes or trenches.
- Be careful to avoid catching the rear blade on stumps or other immovable objects.
- Use care when working on slopes.
- Avoid excessive speed during operation.
- Make adjustments only when the implement is attached to the tractor.
- When using the rear blade in a reverse position, use extra care. Do not ram rear blade into piles of dirt. Tractor lift arms and the rear blade are not built to take high impact loads in this position. Ramming backwards can also dislodge operator from seat and/or tractor controls, resulting in possible serious injury or death.
- Always ease the tractor into the load. It may be necessary to reposition and take less "bite" on the material to move it safely.
- Watch for and avoid hidden obstructions, i.e., buried pipes, rocks, concrete piers, uneven concrete slabs, stumps, etc., when operating.

This SAFETY SIGN is located on the frame of your rear blade. Obey ALL Safety Warnings.

NOTE:
If Safety Sign is missing or damaged, replace immediately.



INSTRUCTIONS

TRACTOR REQUIREMENTS AND PREPARATION

The Rear Blade will fit most Category 1 tractors equipped with a standard 3-point hitch. The pins need to be installed to the inside of the 3-point frame for use with Category 1 tractors. The Rear Blade is an economy blade for use on Category I tractors up to 30 horsepower in size. For use on larger tractors, extra care is required and it is strongly suggested that purchasing a heavier rear blade be considered.

1. Check the tractor's 3-point hydraulic lift system.
2. It should operate up and down smoothly and hold its position when set.
3. Refer to your tractor owner's manual or dealer for any adjustments necessary to put the 3-point hydraulic lift system in good working order.
4. I&T shop manuals will list most specifications and adjustment instructions - available from most farm equipment dealers.
5. Tractor should be equipped with stabilizer bars, adjustable sway chains, or sway blocks to keep the implement from swinging side to side.
6. Smaller size tractors may need front counter weights to counter-balance the weight of the implement.
7. It is recommended that the tractor be equipped with a Rollover Protection System (ROPS) and a seat belt that is used.

ASSEMBLY AND MOUNTING

1. Attach the upper 3-point A-frame members, to the 3-point hitch lugs as shown on page 7, with hardware as indicated.
2. DO NOT tighten hardware.
3. Align the A-frame top link and lower hitch holes in order to allow your hitch pins to pass through them.
4. A-frame should be positioned square to the frame when tightening hardware.
5. Attach rear blade hitch frame to tractor 3-point hitch using a 3A lynch (Cat I) top link pin and lynch pins furnished by customer.
6. The moldboard, cutting edge, and moldboard frame are a one piece weldment. Remove the hex nylock locknut and flat washer from the one inch diameter spindle bolt.
7. Insert the bolt through the large hole at the rear of the 3 pt. hitch frame.
8. Slide the flat washer on the spindle bolt and then re-install the one inch hex nylock locknut.
9. Only tighten until lightly snug (the moldboard should be able to rotate by hand but have little to no vertical movement).
10. Your Rear Mounted Blade is now assembled and mounted on your tractor. It is ready to go to work for you.

NOTE: If the moldboard to hitch frame connection becomes loose after blade use, this looseness can be removed by tightening the one inch locknut.

Once the moldboard assembly is mounted to the 3 pt. hitch frame, turn the moldboard assembly to your desired operating angle and insert the angle adjustment shift pin.

NOTE: Always use the tractor anti-sway bars, blocks, or chains to prevent blade side-sway. This is a must when using the blade in a reverse position.

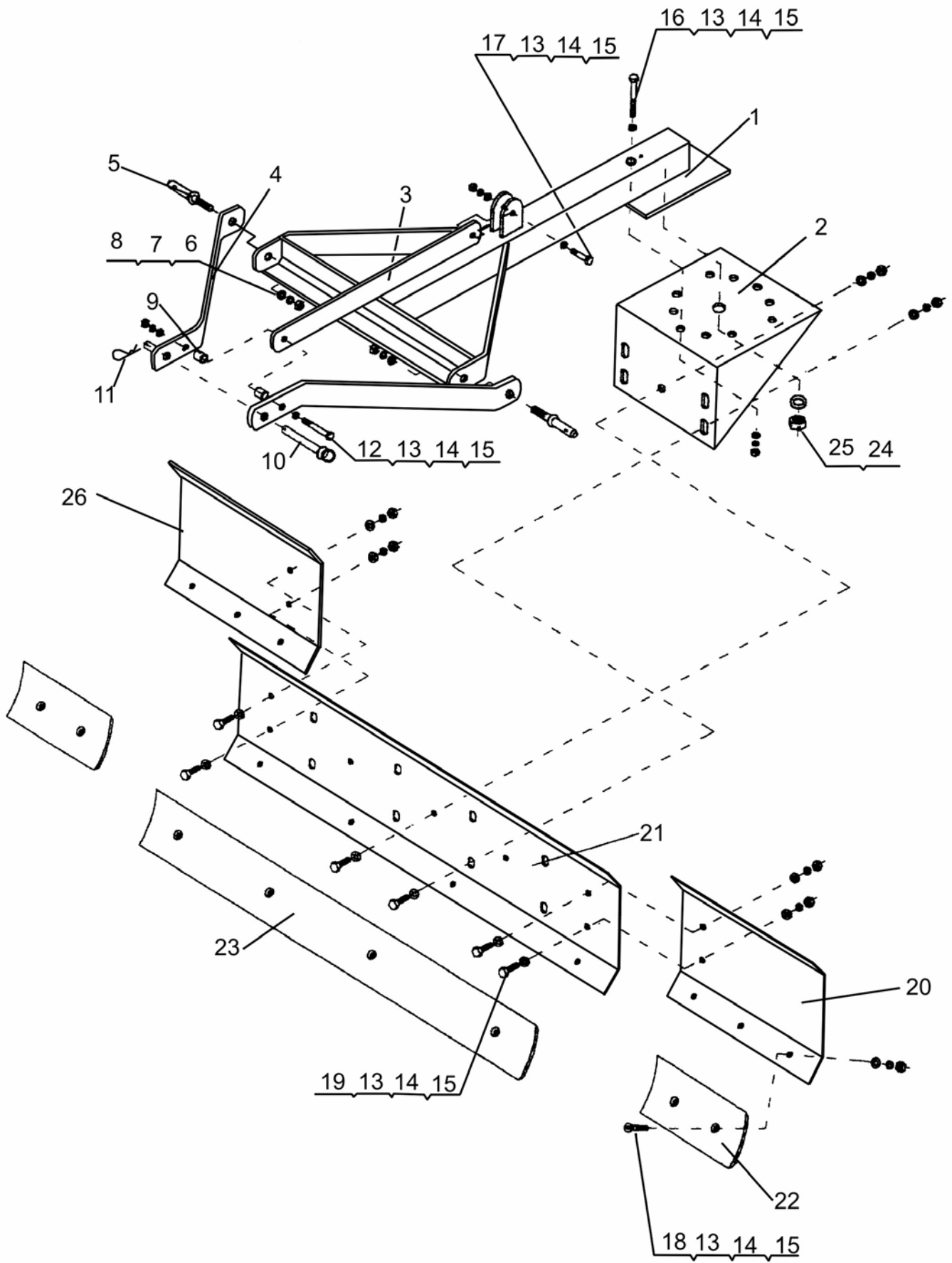
CAUTION!

Be sure your tractor is in good condition. Read all the safety precautions and make sure all tractor operators are familiar with the safety rules of operation.

Please work, drive, play, and live each day with care and concern for your safety and that of your family and fellow citizens.

TROUBLESHOOTING GUIDE

PROBLEM	POSSIBLE CAUSE	POSSIBLE REMEDY
Blade will not penetrate soil	1. Cutting edge dull.	Replace cutting edge.
	2. Blade set too straight.	Increase 3 pt. hitch top link length.
	3. Soil too hard.	Loosen soil with scarifiers or disk. Wait for rain.
Moldboard digging in too much	1. Blade pitch excessive.	Adjust top link (shorten).
	2. Soft ground.	Install skid shoes. Wait for dryer soil.
3 Pt. hitch frame bent	1. Hitting hidden objects in backfill position or ramming backwards at high speed into hard piles of soil.	Use slow speed when in unknown soil conditions.
	2. Using too large of tractor.	Always backfill at slow speed. Preferably use tractor of recommended horsepower. Slow down and use extra care.
Bent moldboard	1. Small curve is normal from welding.	Can be removed, but will not effect blade operation.
	2. Hitting hidden objects.	Know soil conditions. Use slow speed when soil conditions unknown.
	3. Using too large of tractor or one that is heavily weighted and has four wheel drive.	Preferably use tractor of recommended horsepower. Slow down and use extra care.
Unable to hold level grade.	1. Tractor draft control lifting blade.	Set tractor draft control.
	2. Soil too hard.	Use scarifiers.



Part No.	Description	Qty
1	Main beam with angle plate	1
2	Adjustable board	1
3	Connecting rod	1
4	"Z" Stake	2
5	Connecting axis	2
6	Lock washer Ø 20	2
7	Flat washer Ø 20	2
8	Hex Nut M 20	2
9	Bushing	2
10	Pin	1
11	"R" pin Ø 3	1
12	Hex Bolt M 16 x 95	1
13	Flat Washer Ø 16	36
14	Lock washer Ø 16	22
15	Hex nut M 16	22
16	Hex bolt M 16 x 120	1
17	Hex Bolt M 16 x 55	1
18	Crisscross bolt M 16 x 55	8
19	Hex Bolt 16 x 40	11
20	Left Side Panel	1
21	Middle Panel	1
22	Short blade	2
23	Long blade	1
24	Flat Washer Ø 30	1
25	Hex Nut M 30	1
26	Right side Panel	1