



3-POINT DIRT SCOOP

Stock No. SCOOP3PT/03146



INSTRUCTION MANUAL

Please read this manual BEFORE using this item

SPECIFICATIONS

Bucket Capacity	Approximately 4 cu. ft. or .15 cu. yard
Hitch Type	3 Point / Category 1
Recommended Tractor HP	18 - 30 HP
Bucket depth	Approximately 10-1/2 inches

SAFETY

1. Safety of the operator and bystanders is one of the main concerns in designing and developing equipment. However, every year accidents occur which could have been avoided by a few moments of thought and a more careful approach to handling equipment. You, the operator, can avoid many accidents by observing the following precautions and insist those working with or for you adhere to them.
2. Never operate the tractor and scoop until you have read and completely understand this manual, the Tractor Operator's Manual, and each of the safety messages found on the safety decals on the tractor and scoop.
3. Personal protection equipment including hardhat, safety glasses, safety shoes, and gloves are recommended during assembly, installation, operation, adjustment, maintenance, repairing, removal, or moving the equipment. Do not wear loose fitting clothing or jewelry and be sure to contain long hair around equipment.
4. Keep children away from the Scoop and work area at all times.
5. Do not use the Scoop in ways it was not designed to function.
6. Never exceed the limits of a piece of equipment. If its ability to do a job, or to do so safely, is in question- DON'T TRY IT.
7. A minimum 20% of the tractor and equipment weight must be on tractor front wheels. Without this weight, the tractor could tip over, causing personal injury or death. The weight may be attained with a front-end loader, front wheel weights, ballast in the tires or front tractor weights. When attaining a minimum 20% of the tractor and equipment weight on the front wheels, you must not exceed the ROPS weight certification. Weigh the tractor and equipment. Do not guess or estimate!
8. Use a tractor equipped with a Roll Over Protective System and seat belts. (ROPS)
9. Never operate heavy equipment while using alcoholic beverages or drugs that can hinder alertness or coordination. Consult your doctor about operating this machine while taking prescription medications.
10. Never allow riders on either tractor or in the Scoop.
11. Replace any safety decal that is missing or have become illegible.
12. Parts that have been replaced without decals must have new safety decals applied.
13. Do not modify the equipment in any way. Unauthorized modifications could result in serious injury or death and may impair the function and shorten the life of you or the equipment.
14. Stay alert for uneven terrain, holes, rocks, roots and other hidden hazards. Keep away from drop-offs and hazards that could cause rollover. Use extreme care and maintain minimum ground speed when transporting or operating on hillsides, over rough ground and when operating close to ditches or fences. Be careful and slow down when turning sharp corners and changing direction on slopes. Do not start or stop suddenly on slopes and avoid operating on steep slopes. In extremely uneven terrain, rear wheels weights, front tractor weights, and/or tire ballast should be used to improve stability.



WARNING!

The warnings, cautions and instructions discussed in this instruction manual cannot cover all possible conditions and situations that may occur. It must be understood by the operator that COMMON SENSE AND CAUTION ARE FACTORS WHICH CANNOT BE BUILT INTO THIS PRODUCT, BUT MUST BE SUPPLIED BY THE OPERATOR.

OPERATION BEFORE YOU START!!

Read the safety messages on the implement and shown in the tractor and scoop manual.

Observe the rules of safety and common sense!

FAILURE TO UNDERSTAND AND OBEY A SAFETY WARNING, OR RECOGNIZE A SAFETY HAZARD, COULD RESULT IN AN INJURY OR DEATH TO YOU OR OTHERS AROUND YOU.

THE OPERATOR IS ULTIMATELY RESPONSIBLE FOR THE SAFETY OF HIMSELF, AS WELL AS OTHERS, IN THE OPERATING AREA OF THE TRACTOR AND ATTACHED EQUIPMENT.

Always stop the tractor, set brake, shut off the tractor engine, remove the ignition key and lower implement to the ground before dismounting tractor. Never leave equipment unattended with the tractor running.

1. Stay clear of all moving parts.
2. Do not reach or place yourself under equipment until it is blocked securely.
3. Take all possible precautions when leaving unit unattended.
4. Set parking brake, stop engine and remove key from ignition. Park in level area.
5. Know how to stop tractor quickly in case of an emergency.
6. Scoop should be raised off the ground before use or transportation, and be sure that no one is near the machine.

If Scooping gravel for leveling purposes:

Back the tractor to the pile of gravel.

Lower the Scoop to ground level.

Slowly back into the pile until the "Bucket" is full.

Raise the bucket and transport the stone to the area you will be filling with the load.

Position the Scoop over the area and pull the latch cord to tip the "Bucket".

If Scooping dirt for leveling purposes:

Back the tractor to the base of the raised area.

Lower the Scoop to ground level if the area is no taller than 10-1/2in.

Slowly back the tractor into the raised area to level the surface.

If the raised area is more than 10-1/2 inches, it will be necessary to make several passes to level the area.

MAINTENANCE

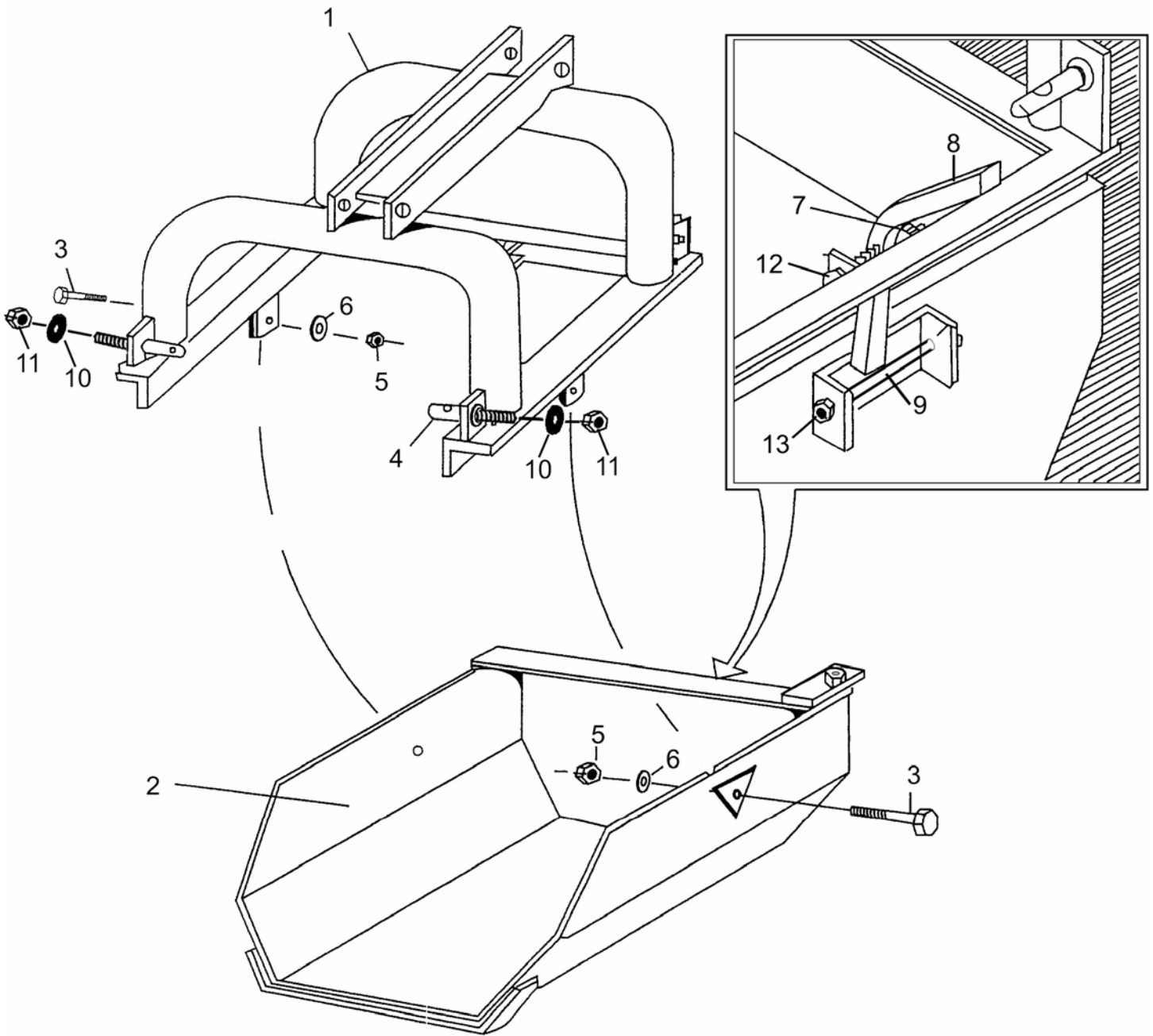
For best performance, oil the Scoop regularly at all hinged points.

Remember to always check for worn or damaged parts. Repair or replace them when needed.

After each use clean the Scoop with a garden hose and wipe dry. This will go to inhibit rust and keep dirt and other materials from wearing down the life of the Scoop.

Should rust appear, remove rust with a strong sandpaper and cover the area with a good quality rust inhibiting paint.

EXPLODED VIEW



PARTS LIST

PART	DESCRIPTION	QUANTITY	PART	DESCRIPTION	QUANTITY
1	Frame	1	8	Scoop Latch Bar	1
2	Scoop	1	9	Bolt 3/4" X 2-7/8"	1
3	Bolt 1-1/4" X 3-1/2"	2	10	Nylon Washer 1-1/2"	2
4	Lift Pins	2	11	Nut 1-1/4"	2
5	Nut 1"	2	12	Bolt 3/4" X 4-1/4"	1
6	Washer 1-1/2"	2	13	Nut 3/4"	1
7	Nut 3/4"	1	14	Nylon Rope (not shown)	1